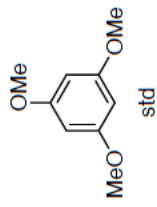
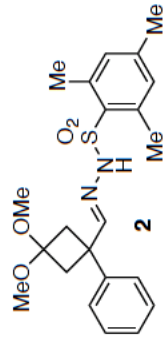


qNMR



$m_{g, \text{std}} = 19.6 \text{ mg}$;
 $MW_{\text{std}} = 168.19 \text{ g/mol}$
 $m_{\text{g}_2} = 49.5 \text{ mg}$;
 $MW_{\text{g}_2} = 416.54 \text{ g/mol}$
molar ratio = 6.10/6 = 1.02;
 $P_{\text{std}} = 99\%$

Thus: $w\%_2 = (19.6 * 416.54 * 1.02 * 0.99) / (49.5 * 168.19) * 100$
= 99.0 %

